

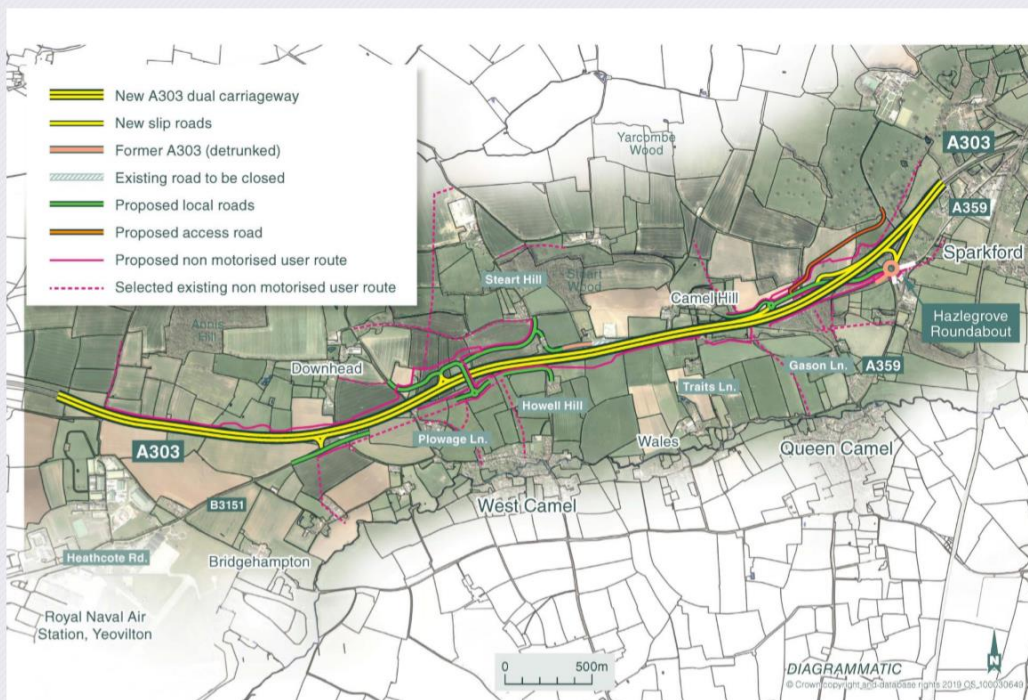
A303 Sparkford to Ilchester Dualling Scheme Briefing Pack Summer 2021

There has been talk about the proposed dualling road works between Sparkford and Ilchester for many years and in January 2021 there was final confirmation that the scheme had received the consents required to progress.

This document has been compiled by SSSDC and Visit Somerset to provide you with a brief summary of the proposed works; including timings, maps and details of how to keep up to date with all the latest news on the scheme.

We have met with the relevant teams from Highways England and their contractors to discuss what the works mean for our businesses, residents and visitors. There are anticipated benefits, but quite obviously we all have concerns about disruption during works and also the longer term impacts on some elements of our visitor economy. We are aiming to provide pertinent information and routes into the right teams so you can air your concerns and ask questions.

Scheme overview



Overview

- The scheme involves 3.5 miles of the existing single carriageway being upgraded to dual carriageway between Sparkford and Ilchester.
- It will include three new junctions at Camel Cross, Downhead and Hazlegrove and two new structures; the Steart Hill Overbridge and Hazlegrove Underbridge
- Physical work due to start September 2021 and continue until opening in early 2024.

Representatives from the South Somerset Tourism and Economic Development teams, along with Visit Somerset, recently met with **Highways England, Galliford Fry** (the construction company) and **HW Martin Traffic Management Ltd** to talk through time scales and more importantly implications for local businesses, residents and holiday visitors.

Key Points

- This summer (late July) there will be an interactive virtual exhibition; a date will be announced shortly for this. We will publish details in the tourism newsletter and on social media when we know more, alternatively you can sign up to the newsletter to receive a direct link, details below.
- Work will be starting in September this year with the establishment of a construction compound (at Hazelgrove) and temporary road, which will keep construction traffic off the local road network.
- Construction will be during 2022 and 2023 with the new road finally being open to traffic in early 2024.
- Most of the work is planned to be taken off line, this means actual road closures will be limited to two weekends and some limited overnight closures. Contraflows will be used instead of closures at certain stages of the construction.

Highways England are in communication with businesses and communities up to a radius of 1.5 miles from the road, which equates to 3,200 addresses and 200 wider stakeholders. If you have not heard from them and feel that you should be on their circulation list and omitted, please let us know and we can pass your details on.

Work starting in 2021

- 

Podimore Roundabout/Camel Cross Junction/Downhead Lane
From September 2021 to November 2023
We will start clearing the site and put up fencing, then we'll divert any utilities in the area.
- 

Downhead Lane to Steart Hill
From September 2021 to January 2024
We will start by clearing the site, putting up fencing and relocating wildlife habitats. We will excavate and move earth to enable building of the new Steart Hill overbridge and connecting roads.
- 

Steart Hill Over Bridge
From September 2021 to May 2022
We will start construction of a new bridge that will eventually span the new road and connect the existing A303 with local roads.
- 

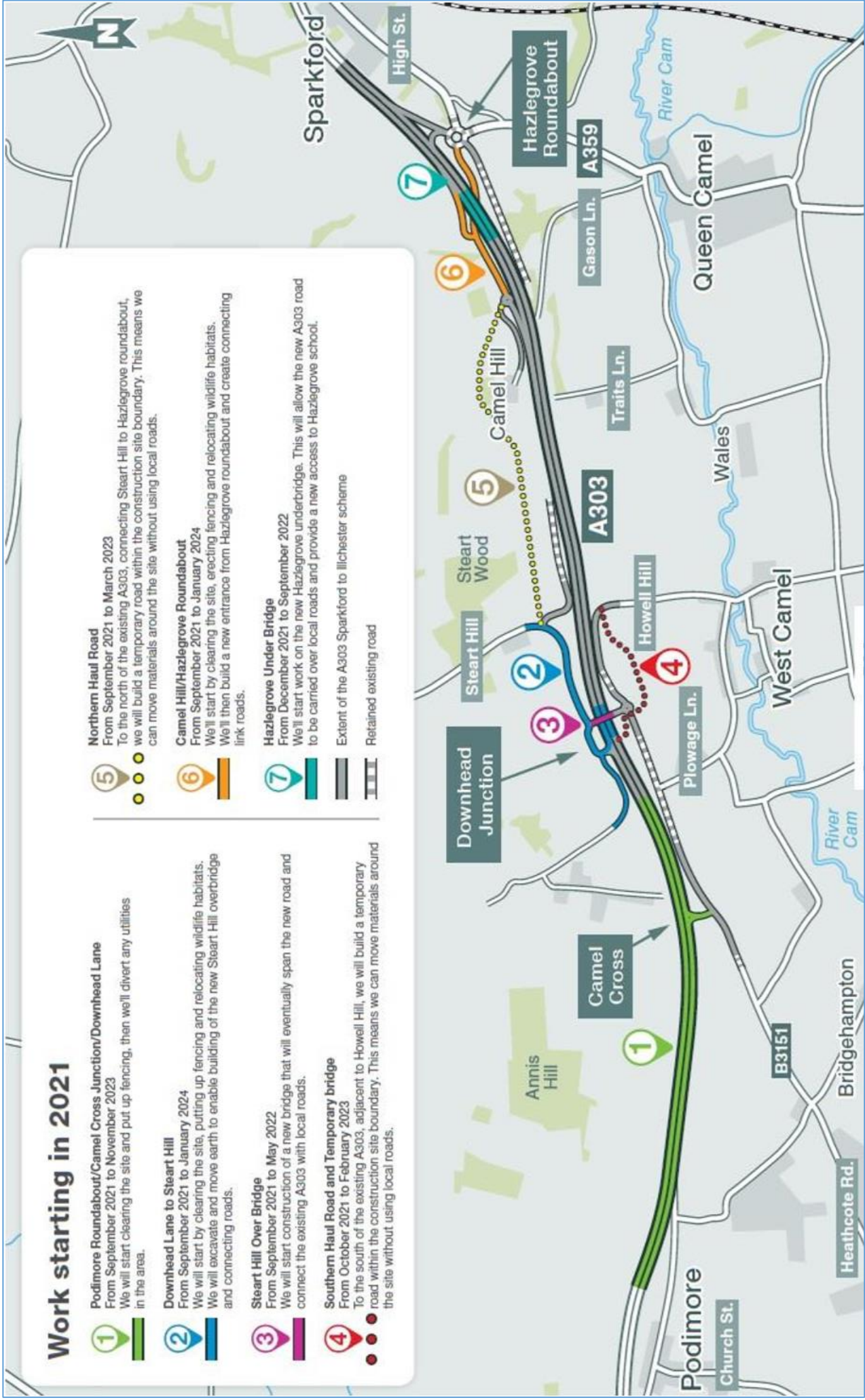
Southern Haul Road and Temporary bridge
From October 2021 to February 2023
To the south of the existing A303, adjacent to Howell Hill, we will build a temporary road within the construction site boundary. This means we can move materials around the site without using local roads.

- 

Northern Haul Road
From September 2021 to March 2023
To the north of the existing A303, connecting Steart Hill to Hazlegrove roundabout, we will build a temporary road within the construction site boundary. This means we can move materials around the site without using local roads.
 - 

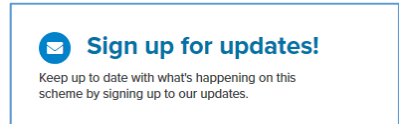
Camel Hill/Hazlegrove Roundabout
From September 2021 to January 2024
We'll start by clearing the site, erecting fencing and relocating wildlife habitats. We'll then build a new entrance from Hazlegrove roundabout and create connecting link roads.
 - 

Hazlegrove Under Bridge
From December 2021 to September 2022
We'll start work on the new Hazlegrove underbridge. This will allow the new A303 road to be carried over local roads and provide a new access to Hazlegrove school.
-  Extent of the A303 Sparkford to Ilchester scheme
 Retained existing road



How to find more information and sign up for the HE newsletter.

To register for updates, go to <https://highwaysengland.co.uk/our-work/south-west/a303-sparkford-to-ilchester/> and click on the sign up for updates box which is on the right hand side of the front page or this is a [direct link](#) to the relevant form.



This is the most recent edition: [A303 Sparkford May 2021 Newsletter](#)

The Highways England website has information about current and proposed road works. The pages of local interest to Somerset are the following.

<https://highwaysengland.co.uk/our-work/south-west/a303-sparkford-to-ilchester/>

<https://highwaysengland.co.uk/our-work/a303-stonehenge/>

<https://highwaysengland.co.uk/our-work/south-west/a358-taunton-to-southfields/>

FAQs

We will be maintaining a list of FAQ's, so please get in touch if you have any questions or concerns and we will try and help. We have had these for starters

Will the road remain open during the scheme?

Yes, it is proposed that the road will remain open for the duration aside from a couple of weekends and some overnight stints.

Why is the scheme happening?

The scheme will help traffic to flow more freely through this stretch, will make the road safer and will support economic growth locally.

What about the existing Brown Signs?

Existing brown signs (Fleet Air Arm, Haynes and Long Hazel Camp Ground) will be retained but repositioned to reflect the new road layout.

Contact details

Visit Somerset, the SSDC Tourism and ED teams are here to help you, please get in touch if you have any concerns and we will do what we can to find answers and support you as much as possible.

SSDC Tourism tourism@southsomerset.gov.uk

Economic development econdev@southsomerset.gov.uk

Visit Somerset info@visitsomerset.co.uk